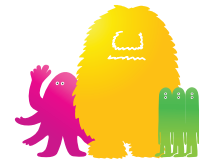


Yerba Buena Sprout Scout



Brought to you by

**CHILDREN'S
CREATIVITY
MUSEUM**

Let's take a journey through Yerba Buena Gardens to discover some fascinating plants located in the heart of San Francisco! After discovering each species, complete the corresponding activity to earn your official Sprout Scout ribbon!

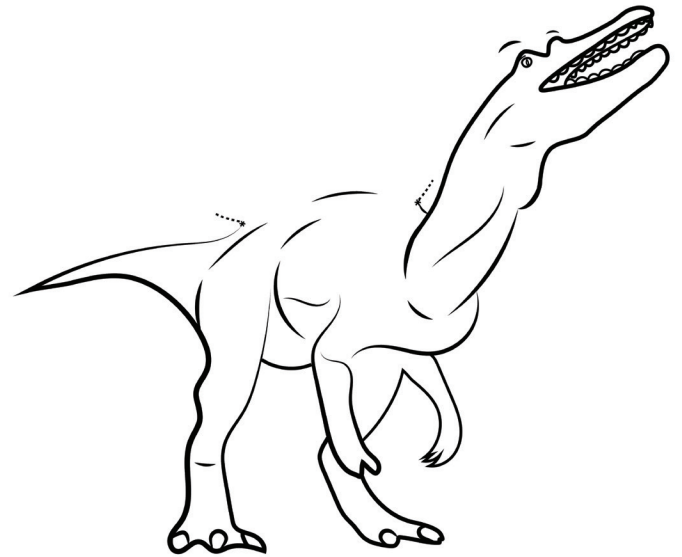
Part 1

To begin your adventure, bring this packet and some coloring materials to the LeRoy King Carousel on 4th and Howard Street in San Francisco

Try rubbing a Rosemary leaf between your fingers and smelling it. What does this remind you of? Try thinking of 3 food dishes that would go well with this herb below!

1. _____
2. _____
3. _____

Try sketching the shape of a Ginkgo leaf to complete the drawing of a Spinosaurus below!



(Hint: Spinosauruses have a big plate on their back like Stegosauruses!)

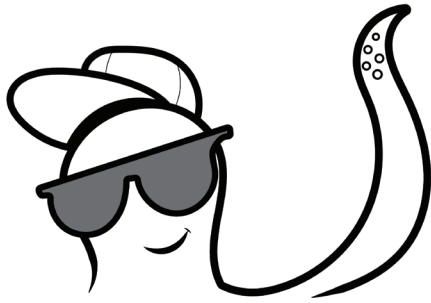
1. Rosemary:

This lovely smelling herb can be spotted in the garden beds to the left of the LeRoy King Carousel. Let your sense of smell be your guide, or just look for pine-needle like leaves with tiny bluish flowers. While many chefs use this herb to add some flavor to their meals, Rosemary also does an excellent job of attracting pollinators, such as bees!

2. Ginkgo Biloba Tree:

Behold! You are about to witness a tree-mendously old species that has been around since the dinosaurs! Located around the giant globe sculpture known as Urge, by Chico MacMurtrie, the Ginkgo Biloba tree can be identified by its iconic fan-like leaves, and is used for a variety of medicinal purposes to this day!

Try drawing your own Aloe Vera leaves to complete the other 7 arms of this Octopus!



3. Aloe Vera:

Located amongst a beautiful array of succulents across the Yerba Buena Gardens pedestrian bridge, (heading toward the Metreon) this species has a slight resemblance to octopus arms, and can be identified by having thin, green leaves with tiny spikes along the edges. The gel within Aloe Vera is most known for treating mild burns. Don't forget to apply sunscreen today!

Part 2

Continue across the pedestrian bridge and walk past the Yerba Buena Offices and chess table seating areas. Make a right turn heading towards the upper portion of the MLK Memorial Waterfalls.

Look for a few large spherical black planters, your journey continues here...

4. The Flapjack Kalanchoe Succulent:

No, those aren't green pancakes you're seeing, this special succulent is nicknamed 'Flapjack' for its unique pancake shaped leaves with red fringes! Try to spot this plant amongst the spherical planters we just stumbled upon. Succulent species come in a variety of unique shapes and sizes, but almost all of them share the quality of being drought resistant! This makes them a great sustainable addition to any garden.

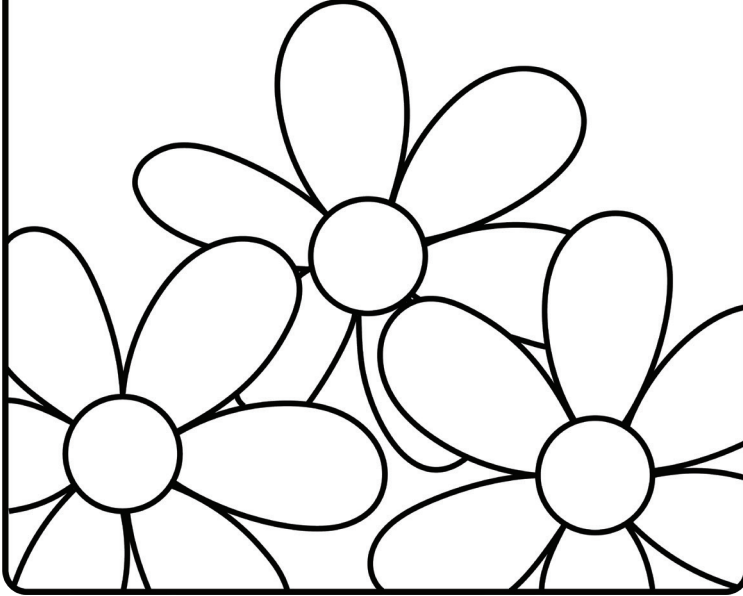
What other interesting leaf shapes do you see around this plant? Try coming up with 3 other clever names for the other plants you see!

1. _____

2. _____

3. _____

Explore around the flower beds and discover what other colors of Daisies you see! Color in at least 3 different species below:



Experiment: Take a moment to reflect on how you are feeling in this exact moment, and write your thoughts below:

Now, try rubbing some lavender leaves between your fingers, close your eyes, and take in the scent. Do you notice any changes in your mood?

5. Arctic Daisy:

Face towards the Yerba Buena Center for the Arts Theatre. On your right hand side, you'll find the Silver City Garden beds, containing a vibrant array of flowers to explore. Among these flowers, you will be able to spot the iconic Arctic Daisy, with its rounded white petals and bright yellow center. Daisies can display a variety of colors from the rainbow, and their leaves are rich with vitamin C, making them a great addition to any salad!

6. Lavender:

Also among the Silver City Garden Flower beds, you can find a tall, fragrant Lavender shrub. This species is known for its soft, soothing scent, and can be identified by their long stems with bluish-purple flowers. This versatile herb is known to aid in relaxation and improve sleep quality. Pollinators love this plant as much as we do, so proceed with caution before attempting our experiment!

You're more than halfway done!
Keep Going!

Part 3

Make your way down the ramp or stairs to the base of the MLK Memorial Waterfalls. Face towards the waterfall and look to your left towards SF MOMA.

You will find our next species is completely surrounded by water, and enclosed in its own stone island...

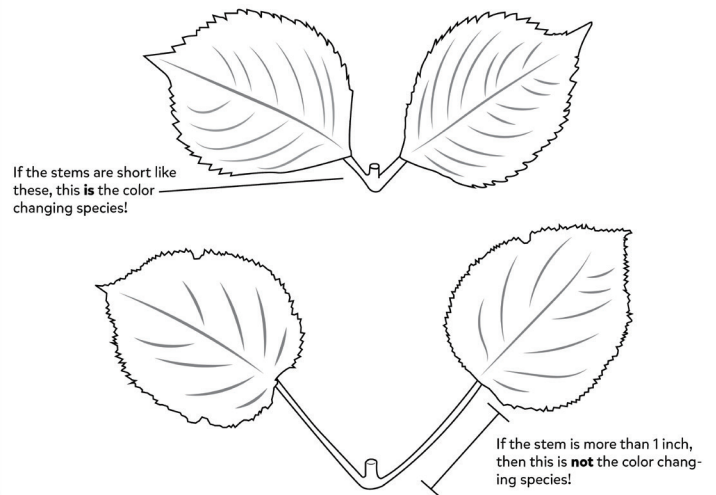
Take a look at the list of items below and check off which ones you have used today:

- ☐ Paper
- ☐ String or Shoelace
- ☐ A Bowl
- ☐ Eating Utensils
- ☐ Shoes or Sandals
- ☐ A Blanket or Mat



If you lived in Ancient Egyptian times, these would all be made out of the Cyperus Papyrus plant! Take a moment to write down one other item you could make with these strong plant fibers:

Not all species of Hydrangea have this unique quality. To determine which species you have discovered, circle the leaf pattern that matches the one you see!



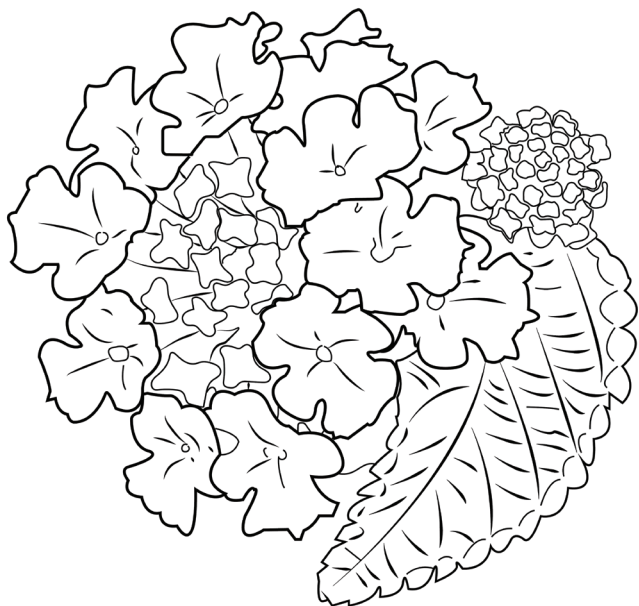
7. Cyperus Papyrus:

The Cyperus Papyrus plant was originally cultivated in Egypt along the Nile River, which explains why it is planted in this very watery location. The strong fibers in the reeds, leaves, and roots of this plant were used to make valuable tools like paper, baskets, and even boats!

8. Hydrangea:

Head towards Mission Street down the meadowy path sprinkled with ferns behind the Yerba Buena Gardens Stage. Along this path, you will discover the Hydrangea shrub appears with large, rounded heads of pink, blue, or white flowers and medium sized green leaves. For certain species, the flower colors of this plant will change colors depending on the aluminum content of their soil!

Try coloring this Lantana Flower in with the color pattern you found in the gardens!



9. Lantana:

Continue along this path, and you will start to notice clusters of little red, orange, yellow, or purple flowers scrambling along the ground. The Lantana shrub is a vibrant tropical native species with colorful flowers and tiny green leaves. It readily attracts pollinators, and repels pesky mosquitos. Despite their colorful attributes, these flowers can be toxic if eaten by pets, so proceed with caution!

Bonus Plant!

Our last species of our scouting journey is located at the end of the meadowy path, tucked away in a concrete nook next to the Yerba Buena Center for the Arts.

Head towards the concrete nook until you spot a shrub with white and purple flowers...

Take a moment to appreciate the plant life around you. Write or draw 3 things that reflect how you feel about the journey you took today:

10. Sea Mallow:

The Sea Mallow is related to the tropical Hibiscus flower, and can be identified by their five distinct petals with white edges and purple centers. The leaves have a pale green hue and are attached to elongated stems. Like the other species we discovered today, there are a few medicinal uses for the Mallow species. One of its most notable qualities however, is its stunning appearance and beautiful pigmentation.

Congratulations! By going on this journey today, you have earned your official Scout Sprout ribbon! Color it in, and display it proudly to show your newfound knowledge!

Wherever you are, Sprout Scout, be sure to take a moment to observe and appreciate the natural world around you!

Don't forget to share pictures of your adventure with us @Creativitykids

